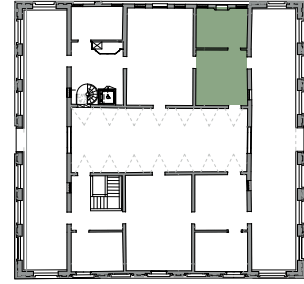


BISHOP'S ANTECHAMBER AND CHAMBER



The Bishop's Chamber when under the ownership of the Olcese family The Bishop's Chamber as it appears today

The Bishop's Antechamber and Chamber now feature a number of furnishings that were already in the villa, alongside pieces sourced from other FAI properties, with a view to evoking the interiors of the episcopal *domus*. The walls still feature faint fresco traces of the same faux-tapestried, garlanded decorations found in the *Salotto* (Lounge), to which the Antechamber was at one time linked, thus forming a single space flanked by the eastern loggia. The upper zone of the wall is occupied by a frieze of plant volutes and mascarons.



DID YOU KNOW

Used over the course of the centuries by the bishops of Padua as a holiday home and as a farm, the villa's use changed over the course of the 20th century. Certain transformations - as can be seen in the photo of the Salone (Hall) on the left - made it suitable for hosting small groups that, in the silence of the Euganean Hills, found the ideal conditions for periods of rest and spiritual education. This utilisation lasted until 1962, when the villa was purchased by the Olcese family, which commissioned its restoration.